



Explore Your Thermal Life

Q2



- Aluminum body
- High-end optical lens
- Lanyard opening
- Rotatable protective cover

240x180 High Performance Core **56°x42°** Large Field of View **15°C~150°C** Industrial Temp. Measurement

Measuring Mode Realtime&Offline Measurement **8 kinds** Color Palette **Plug and Play** Battery Free

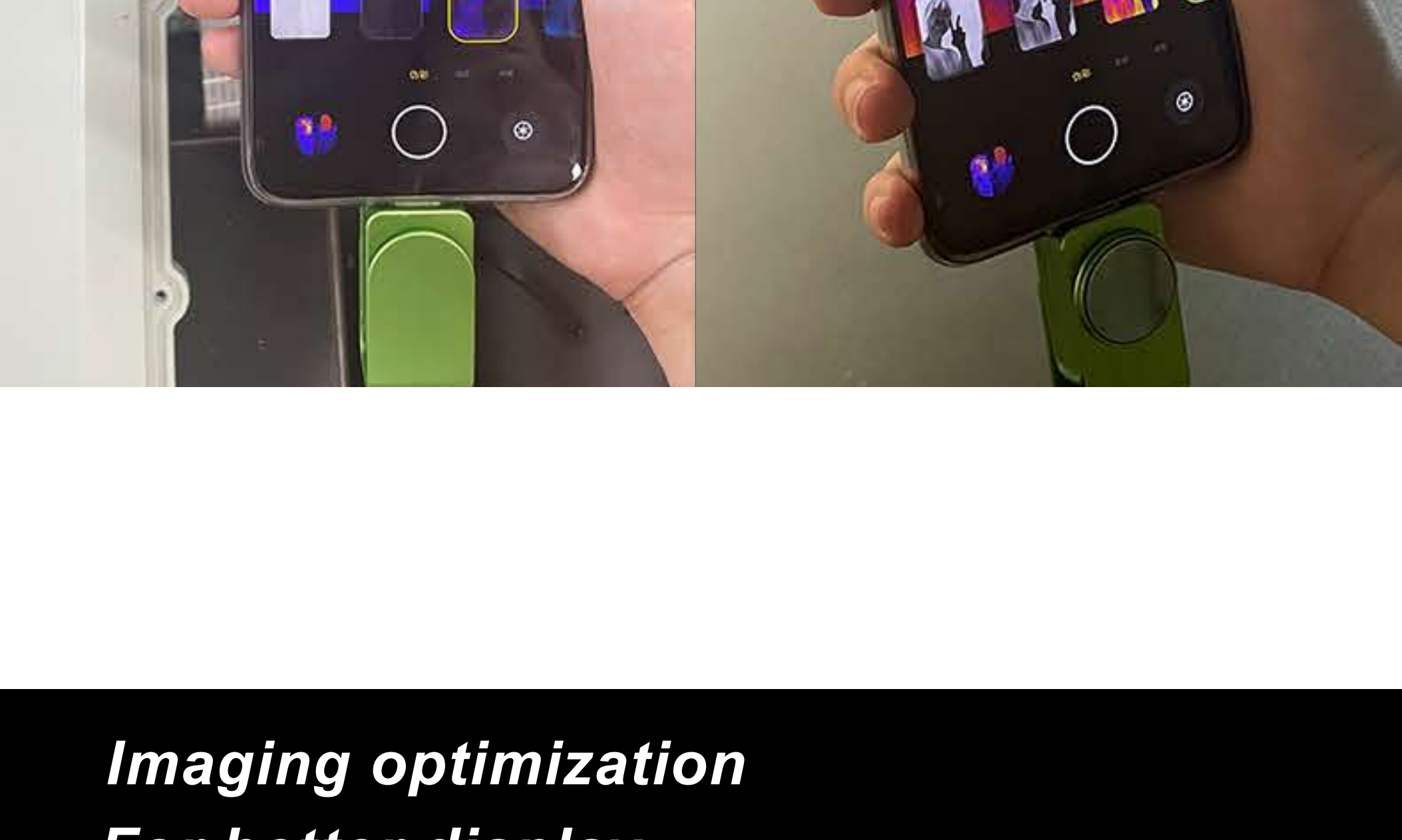


For professionals

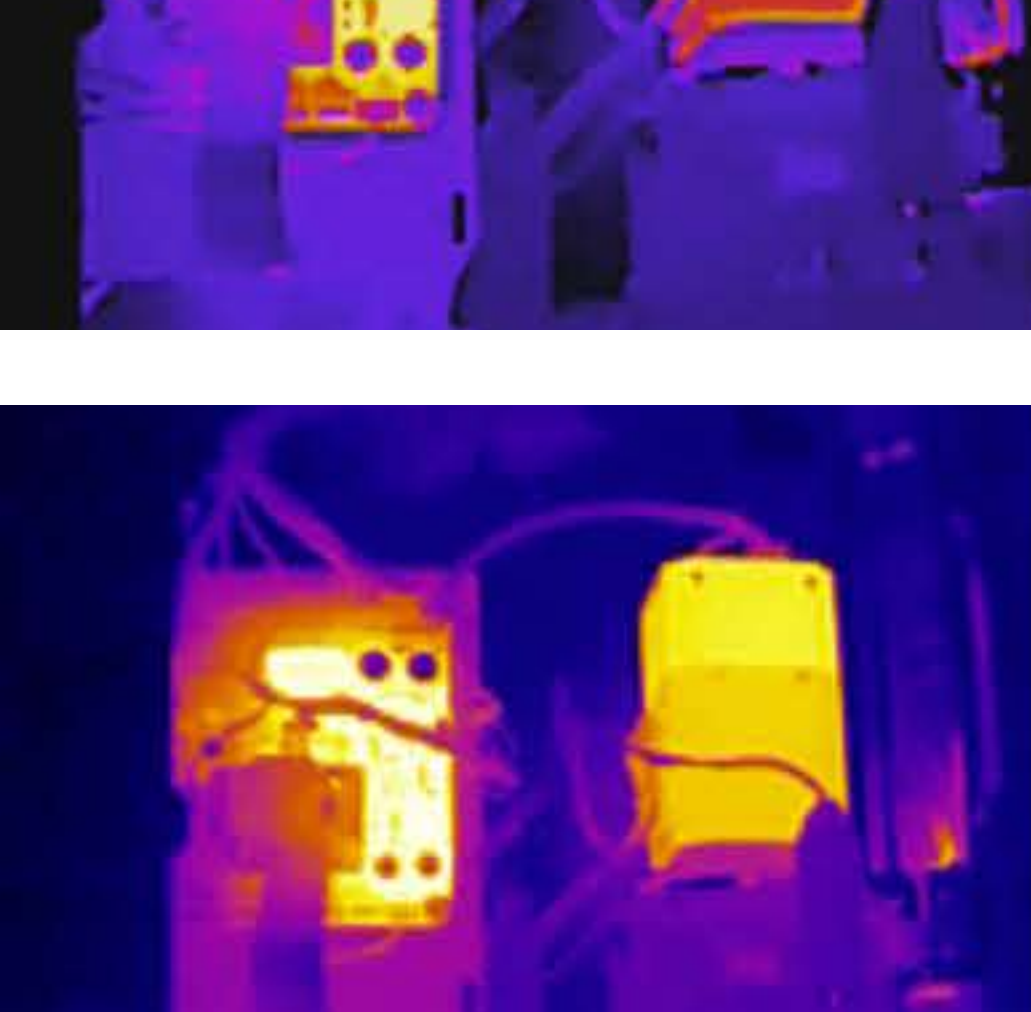
- PCB detection
- Line troubleshooting
- Floor heating leak detection
- Temperature measurement

For individuals

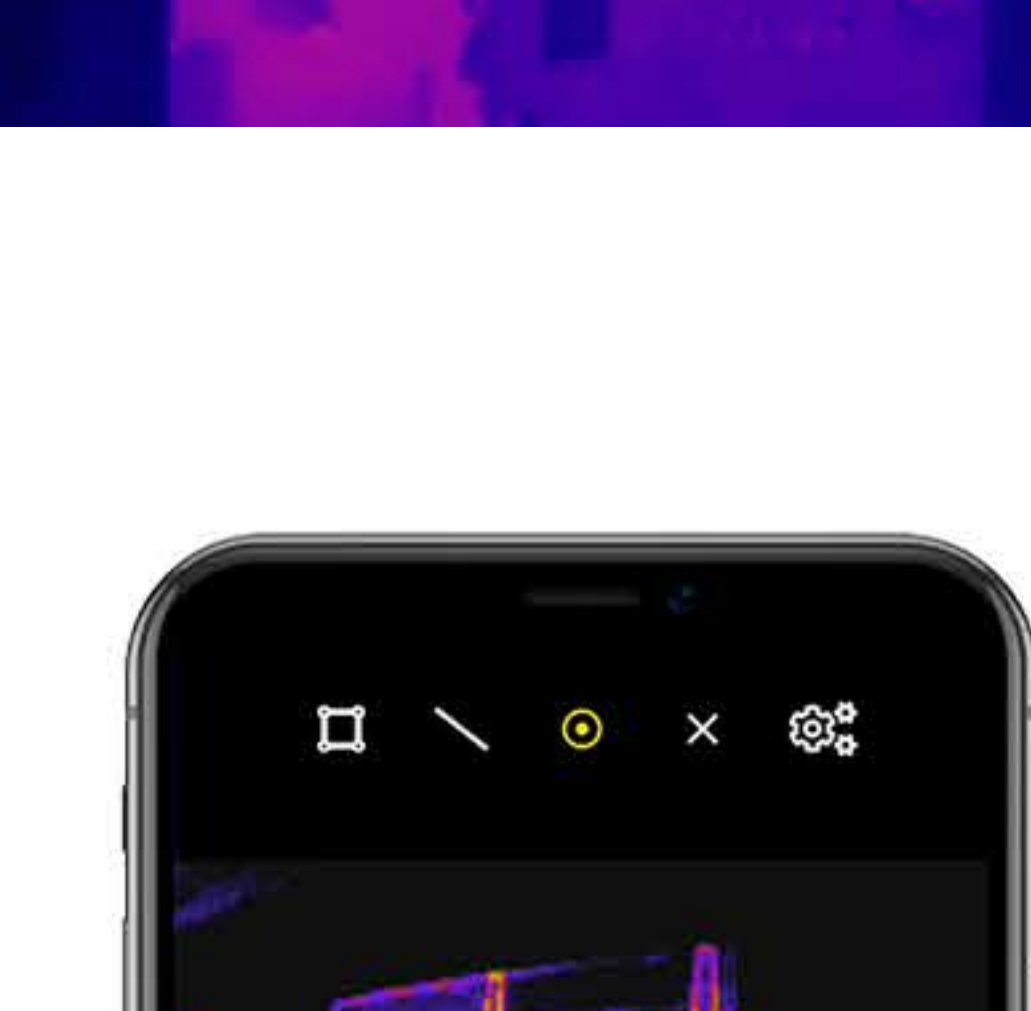
- Thermal photography
- Outdoor observation
- Night safety
- Hidden camera detection



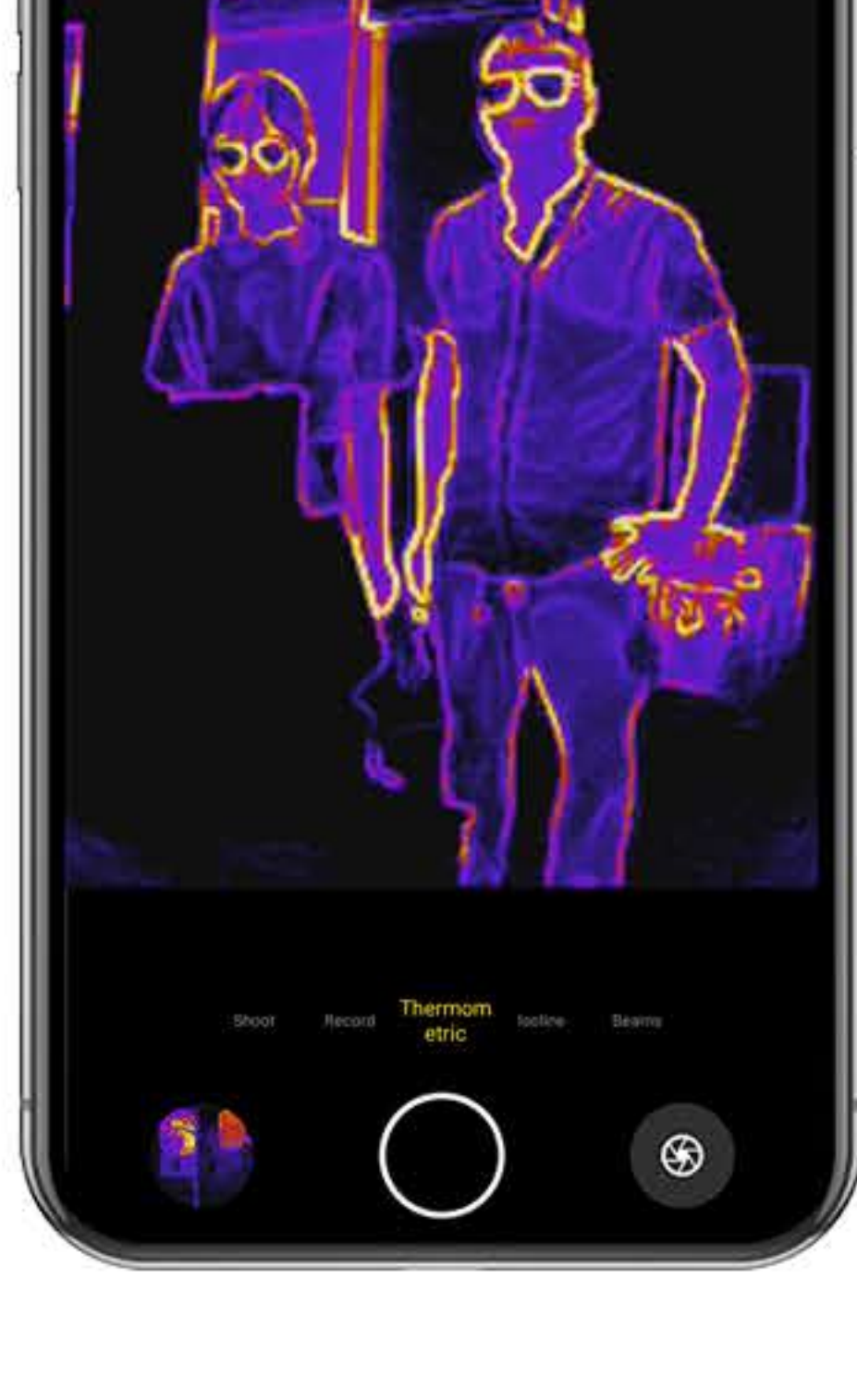
Imaging optimization For better display



Imaging effect of Q2
Optimized algorithm
Clearer image and higher contrast



Imaging effect of other brands
Normal algorithm
Blurry and of low contrast

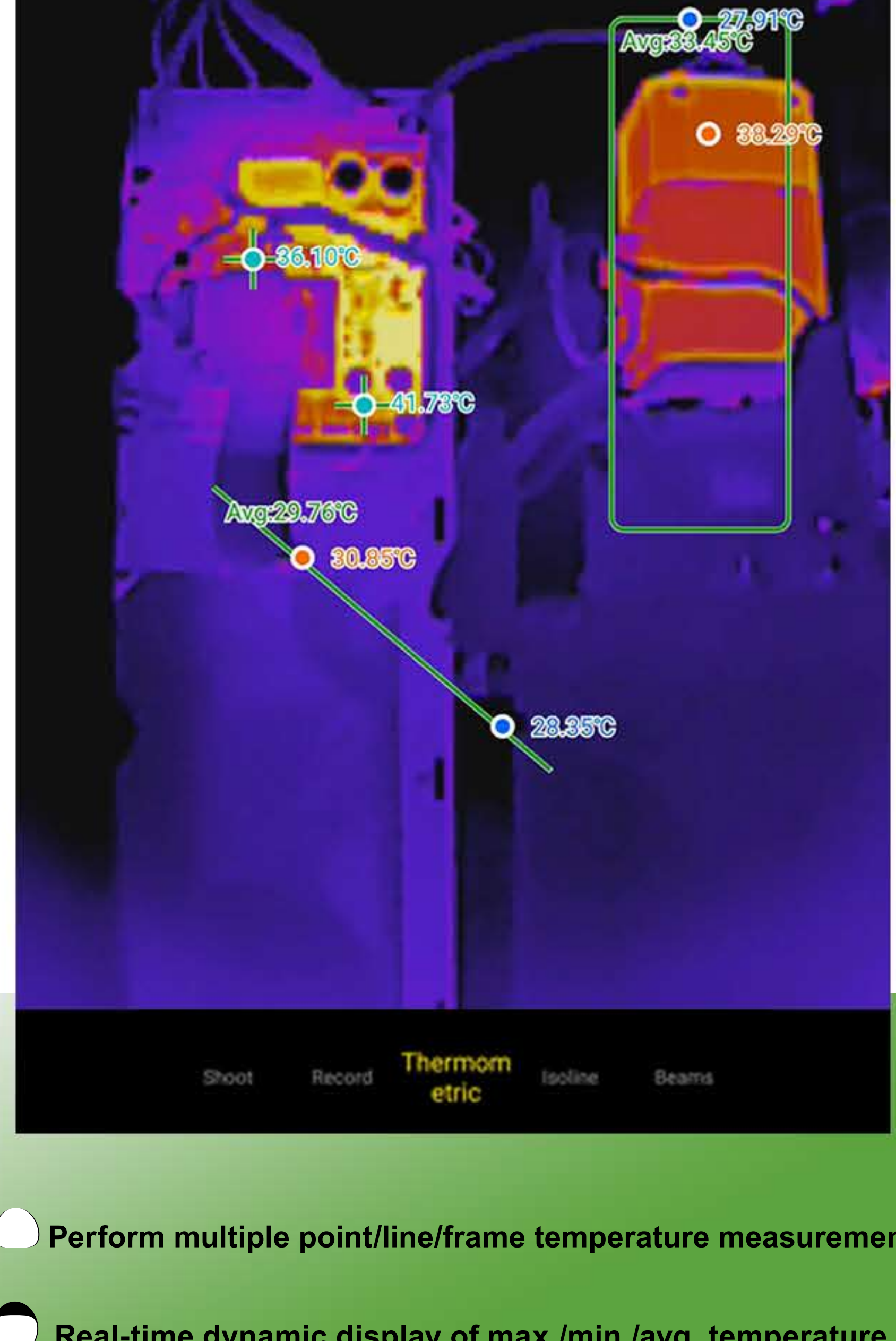


Infrared Enhancement

Increase the contrast of the image
Faster and easier identification of the target

A new era for Intelligent temperature measurement

APP Function: Real-time temperature measurement

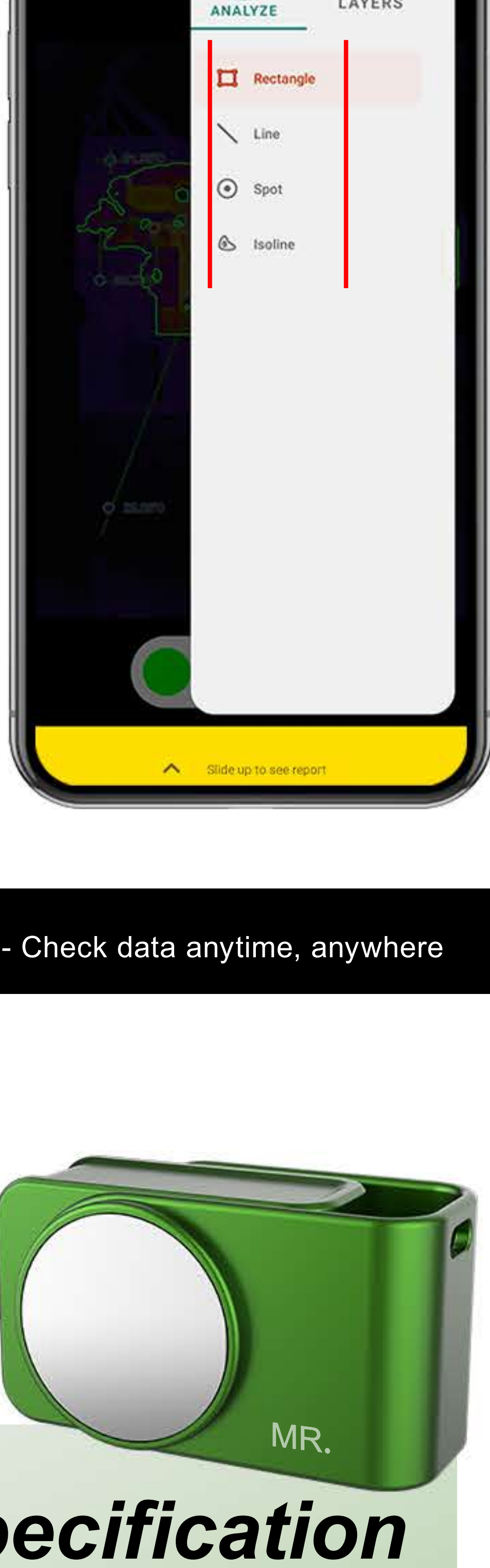
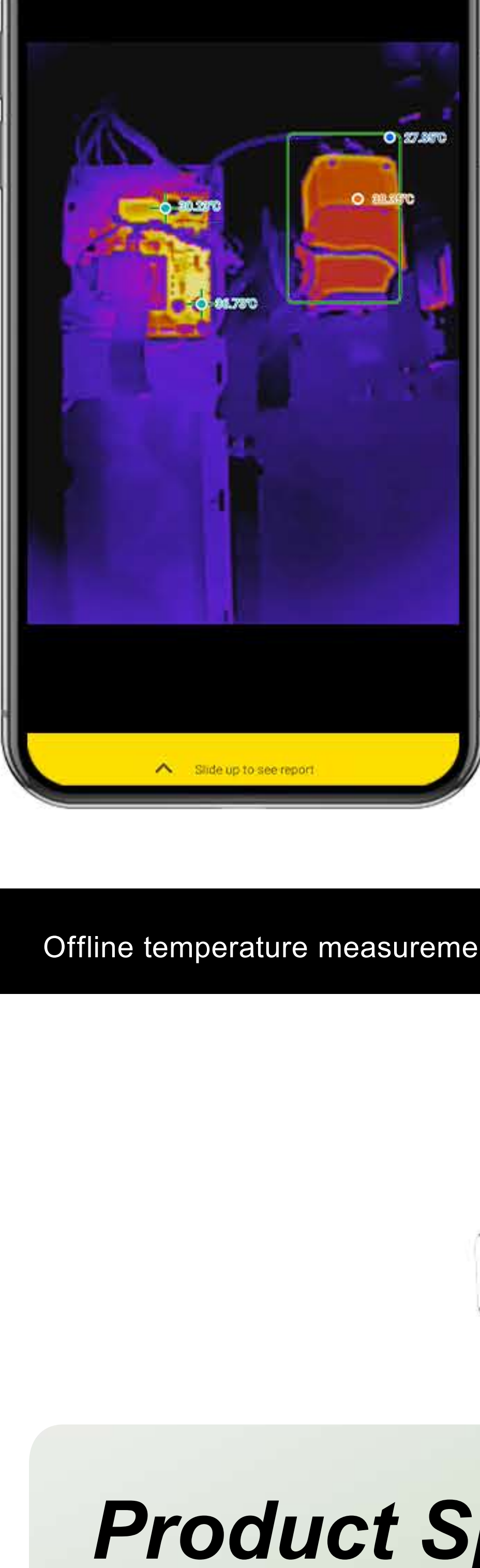


- Perform multiple point/line/frame temperature measurement
- Real-time dynamic display of max./min./avg. temperature

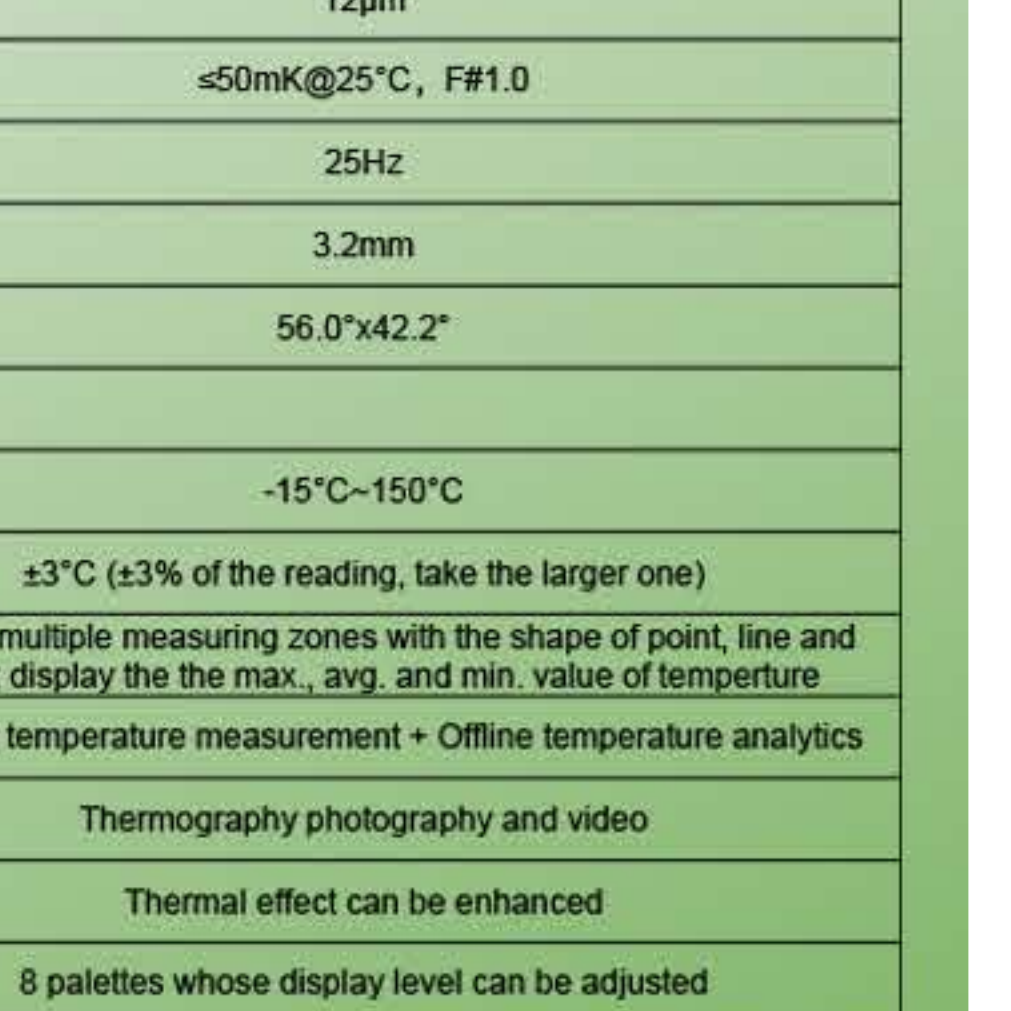
APP Function: Offline temperature analysis

43,000 pixel data

All saved in the picture



Offline temperature measurement - Check data anytime, anywhere



Product Specification

More services are provided(e.g. Laser printing).
Please contact customer service for more details.

Thermal		
Resolution	240x180	
Pixel Pitch	12μm	
NETD	≤50mK@25°C, F#1.0	
Frame Rate	25Hz	
Focus Length	3.2mm	
Field of View	56.0°x42.2°	
Functions		
Temperature Measurement	Range	-15°C~150°C
	Accuracy	±3°C (±3% of the reading, take the larger one)
	Analytics	Support multiple measuring zones with the shape of point, line and frame; display the max., avg. and min. value of temperature
	Mode	Realtime temperature measurement + Offline temperature analytics
Media	Thermography photography and video	
Image Processing	Thermal effect can be enhanced	
Color Palette	8 palettes whose display level can be adjusted	
Report Generating	The report includes thermal image, temperature data, 3D view, location etc., and can be downloaded to the smartphone	
General		
Compatible Device	Android 5.0 and above	
Interface	USB type C	
Work Temperature	-20°C~60°C	
Power Consumption	0.35W/350mW	
Size	41x16x22mm	
Material	Body: aluminum alloy; Camera: germanium lens	
Weight	<30g	